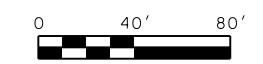
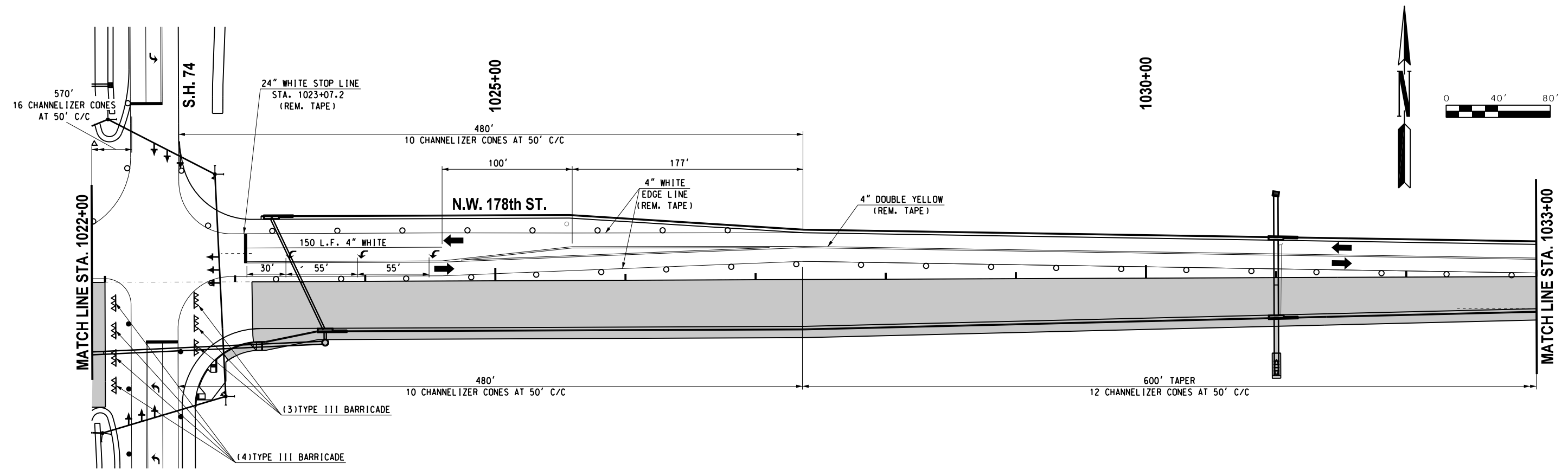
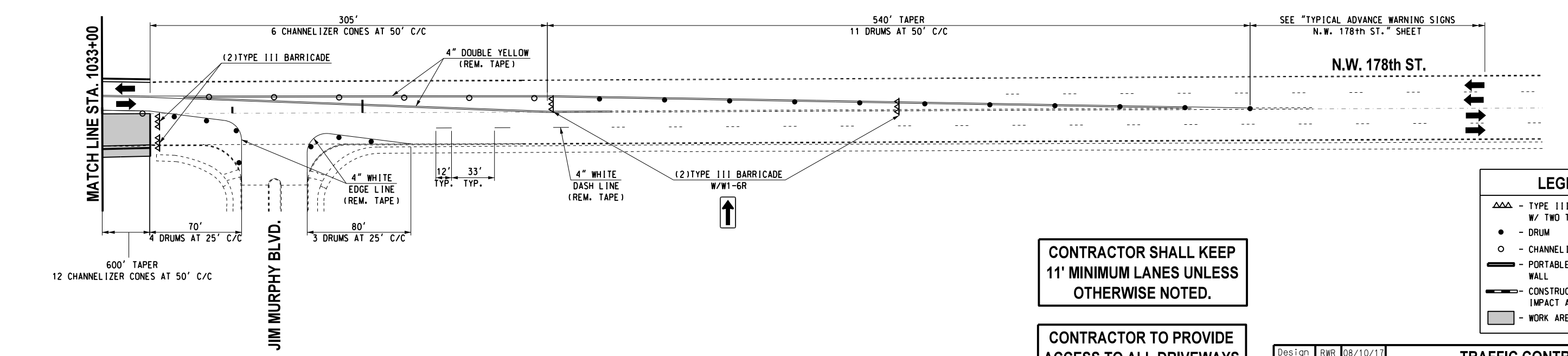


REVISIONS		
NO.	DESCRIPTION	DATE



**ALL PAVEMENT MARKINGS
SHALL BE REMOVABLE
TAPE**



LEGEND	
△△△	- TYPE III BARRICADE W/ TWO TYPE "A" LIGHTS
●	- DRUM
○	- CHANNELIZER CONE
▬	- PORTABLE CONC. BARRIER WALL
▬▬▬	- CONSTRUCTION ZONE IMPACT ATTENUATOR
■	- WORK AREA

**CONTRACTOR SHALL KEEP
11' MINIMUM LANES UNLESS
OTHERWISE NOTED.**

**CONTRACTOR TO PROVIDE
ACCESS TO ALL DRIVEWAYS
DURING CONSTRUCTION.**

Design	RWR	08/10/17
Drawn	GDB	08/10/17



**TRAFFIC CONTROL
PHASES 3U,4A & B (SHEET 2 OF 2)
N.W. 178th ST.**

State Job No. 14964(08) Sheet No. T95

08/10/17 G:\0\Projects\T-1662B SH 74 @ NW 178th, NW 192nd & NW 206th\CAD\TC PHASE 3U,4A,B.2 NW 178th.dgn